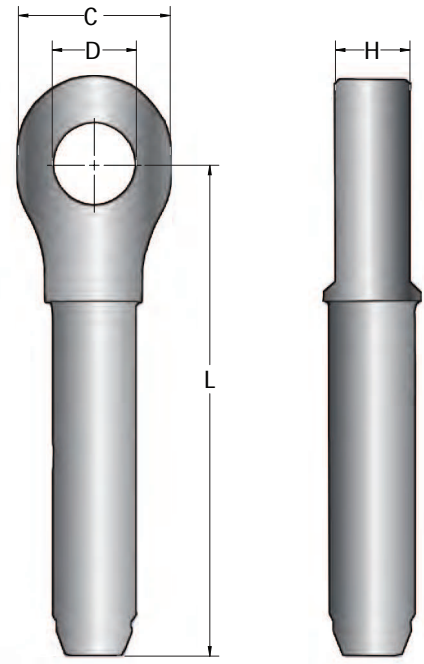
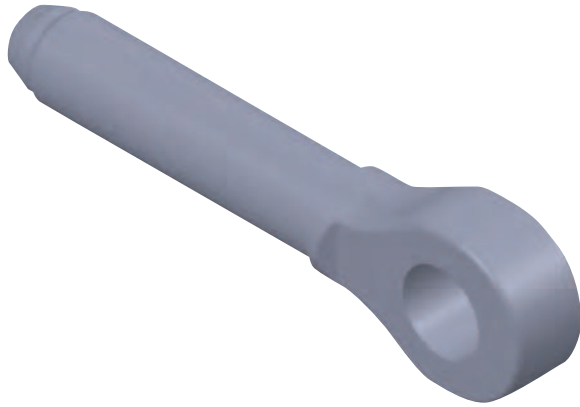


Closed Swaged Sockets



- » Material: Weldless, drop-forged steel
- » Assembly length is measured from the centerline of pins for both open and closed swaged sockets
- » Swaged sockets are 100% efficient for spiral strand. Not suitable for full locked coil.

Closed Swaged Sockets (Metric)

Part #	Diameter (mm)	Weight Each (kg)	Dimensions (mm)				After Swage (mm)
			C	D	H	L	
MCS - 13	13	0,64	51,0	26,9	21,8	146	23,1
MCS - 14	14	1,32	60,5	31,8	28,7	184	29,5
MCS - 16	16	1,29	60,5	31,8	28,7	184	29,5
MCS - 19	19	2,27	73,2	36,6	33,3	219	36,1
MCS - 22	22	3,08	79,2	42,9	38,1	257	39,4
MCS - 25	25	4,72	92,0	52,5	44,5	292	45,7
MCS - 28	28	6,72	102	58,5	51,0	324	52,0
MCS - 32	32	9,78	114	65,0	57,0	365	58,5
MCS - 35	35	12,9	127	65,0	57,0	400	65,0

Closed Swaged Sockets (Imperial)

Part #	Diameter (in)	Weight Each (lb)	Dimensions (in)				After Swage (in)
			C	D	H	L	
MCS - 300	1/2	1.41	2.00	1.07	0.87	5.75	0.91
MCS - 302	9/16	2.90	2.38	1.28	1.14	7.25	1.16
MCS - 303	5/8	2.84	2.38	1.28	1.14	7.25	1.16
MCS - 304	3/4	4.99	2.88	1.49	1.33	8.63	1.42
MCS - 306	7/8	6.78	3.12	1.73	1.53	10.09	1.55
MCS - 308	1	10.38	3.62	2.11	1.78	11.50	1.80
MCS - 310	1 1/8	14.78	4.00	2.37	2.03	12.75	2.05
MCS - 312	1 1/4	21.52	4.50	2.62	2.25	14.38	2.30
MCS - 314	1 3/8	28.38	5.00	2.62	2.29	15.75	2.56